



Disaster Resilience

Volcano Edition

2025 The Alaska Bird Club
P.O. Box 101825 • Anchorage, AK 99510
EIN: 92-0134866
Email: akbirdclub@yahoo.com
Voice mail: (907) 868-9070



Emergency Preparedness Planning

Being prepared can:

**Reduce
fear,
anxiety,
and losses**



**Reduce
the
impact of
disasters**

Emergency Preparedness Planning:

What kinds of emergencies or disasters should I prepare for?



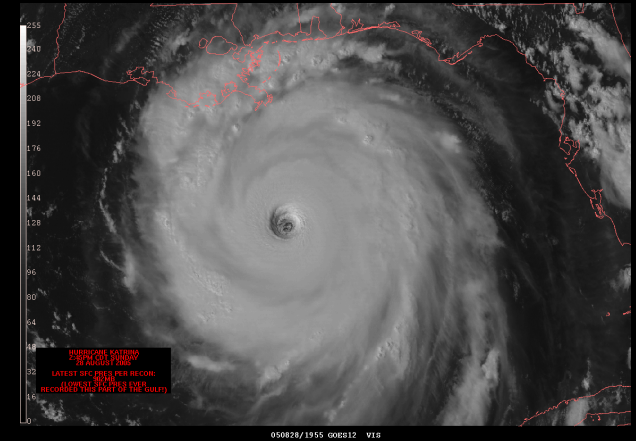
Personal: your home



Emergency Preparedness Planning:

What kinds of emergencies or disasters should I prepare for?

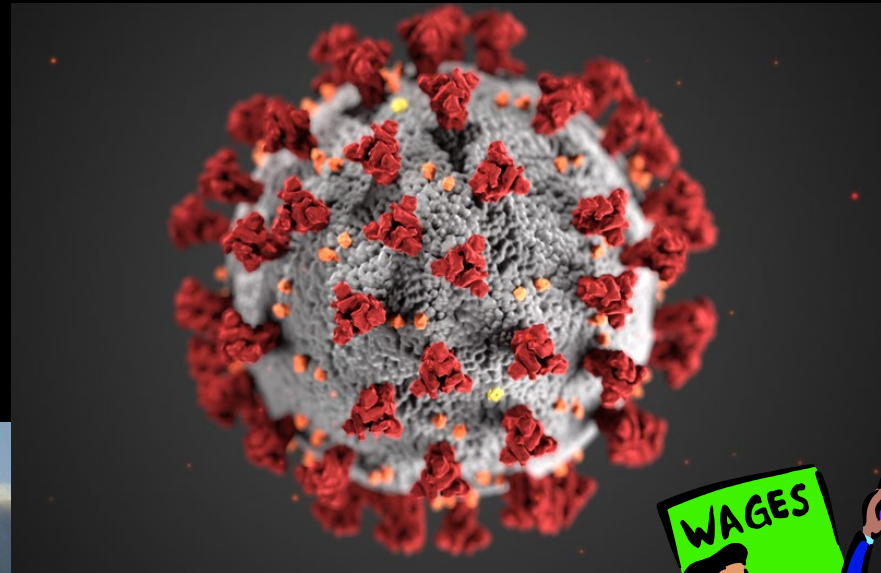
Your neighborhood, city, or State



Emergency Preparedness Planning:

What kinds of emergencies or disasters should I prepare for?

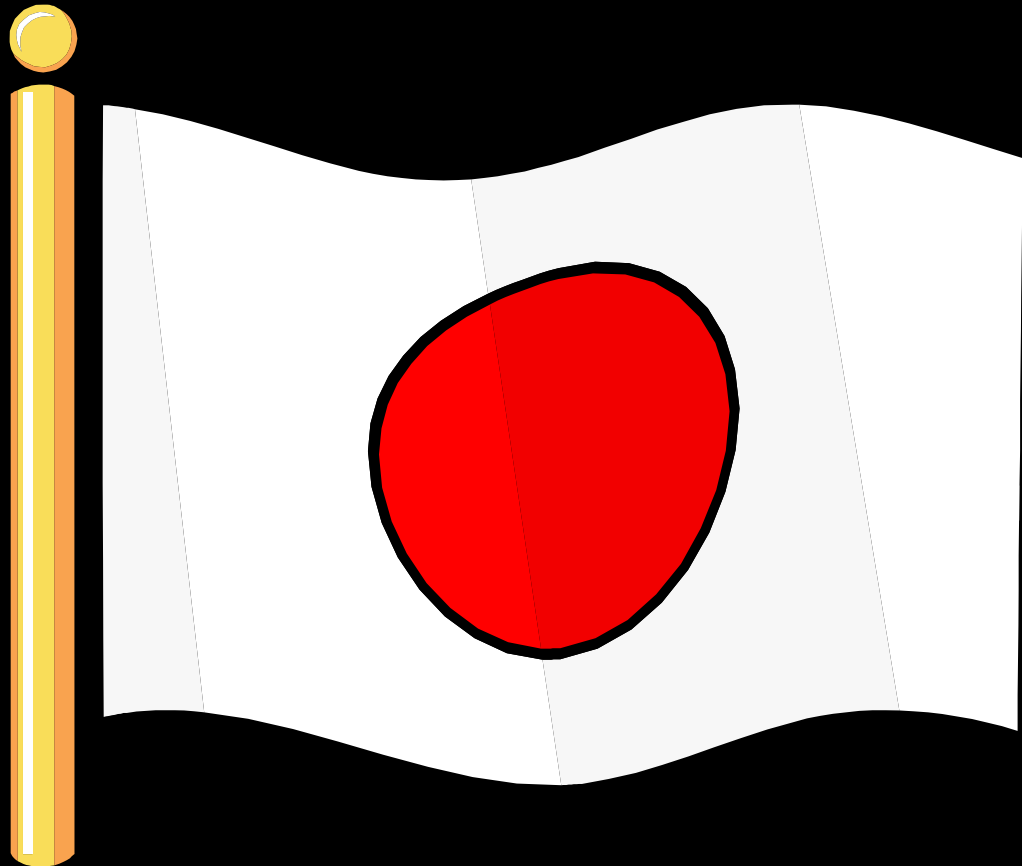
Regional and national



Emergency Preparedness Planning:

What kinds of emergencies or disasters should I prepare for?

Sometimes, they come in combinations



Japan, March 11, 2011

Earthquake

Tsunamis

Nuclear

Emergency Preparedness Planning:

Who is out there to help me?

Local



State



Federal



Friends, family, neighbors, and YOU!

Faith-based and private



Emergency Preparedness Planning:

Who is out there to help me?

Friends, family, neighbors, and YOU!



Emergency Preparedness Planning:

Important Thing #1: Self Reliance

It takes time for emergency response organizations to get up to speed in a disaster

YOU are the first line of protection for your family members, both human and animal

Plan to take care of yourself for at least **7 DAYS**, perhaps longer.



Emergency Preparedness Planning:

Important Thing #2: Prepare your Human Supplies First

Build your human family disaster kit first

You won't be much help to your birds (or your other pets) if you cannot take care of yourself!



Emergency Preparedness Planning:

Important Thing #3: Be flexible and inventive: Be RESILIENT!

Stressful situation

Chaos rules

Each disaster has its own "personality"

You cannot plan for every contingency



Emergency Preparedness Planning:

Important Thing #4: Practice, practice, PRACTICE!

Consider your flock size
and personalities

Turn disaster drills and evacuation
exercises into a game

Practice evacuation with stuffed animals



Emergency Preparedness Planning:

Basic Preparedness



Get informed

Develop a plan

Assemble your disaster supplies

Maintain your plan and supplies

Emergency Preparedness Planning:

(Pretend you just heard that “record scratch” sound)

Mt. Spurr
August 18, 1992

Let's talk about
volcanoes and ash



Emergency Preparedness Planning:

Mt. Spurr

ALASKA VOLCANO OBSERVATORY DAILY UPDATE

U.S. Geological Survey

Tuesday, April 1, 2025, 11:56 AM AKDT (Tuesday, April 1, 2025, 19:56 UTC)

SPURR (VNUM #313040)

61°17'56" N 152°15'14" W, Summit Elevation 11070 ft (3374 m)

Current Volcano Alert Level: ADVISORY

Current Aviation Color Code: **YELLOW**

Unrest continues at Mount Spurr volcano. Seismicity remains elevated with numerous small, shallow volcanic earthquakes detected beneath the volcano over the past day. No activity detected in satellite data or web-camera data.

AVO continues monitoring activity at Mount Spurr for signals indicating that the volcano is moving closer to an eruption. **Based on previous eruptions, changes from current activity in the earthquakes, ground deformation, summit lake conditions, and fumarolic activity would be expected if magma began to move closer to the surface. Therefore, if an eruption occurred, it would be preceded by additional signals allowing warning.**

The volcano is monitored using local seismic, infrasound, web camera, and GNSS stations along with regional infrasound, lightning networks and satellite data.

<https://volcanoes.usgs.gov/hans-public/notice/DOI-USGS-AVO-2025-04-01T19:40:22+00:00>



Emergency Preparedness Planning:

Volcano Dangers

Pyroclastic Flow

A fast-moving, destructive current of hot gas, ash, and volcanic debris that flows down the slopes of a volcano

(Think “500 degree avalanche of ash”)



Emergency Preparedness Planning: Volcano Dangers

Lava

Molten rock that erupts onto the Earth's surface (it's magma beneath the surface, lava above the surface)



Emergency Preparedness Planning: Volcano Dangers

Ash

A mixture of rock, mineral, and glass particles expelled from a volcano during an eruption.

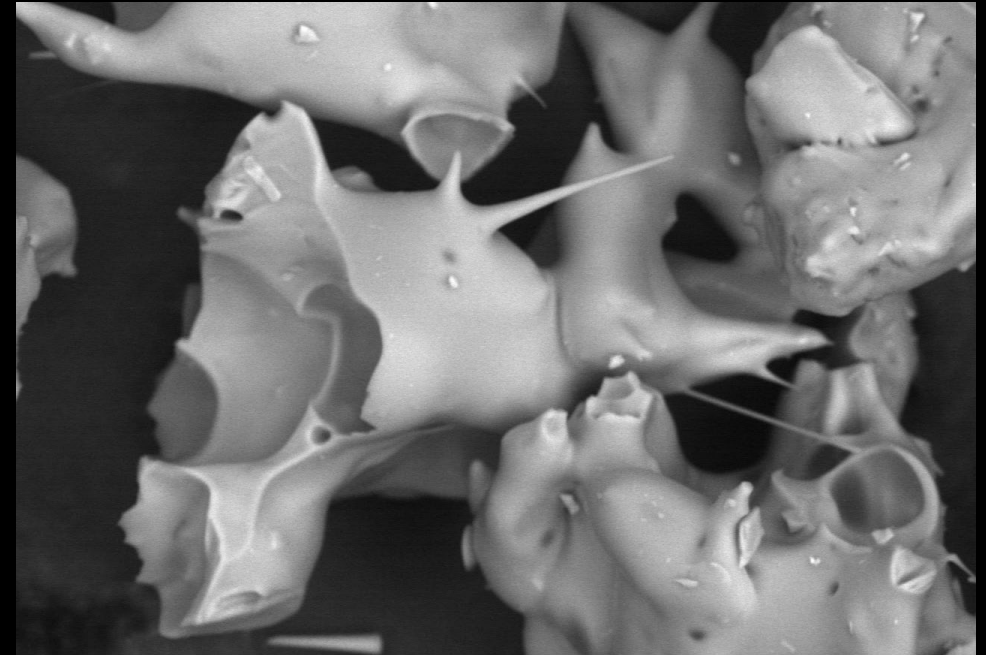
It consists of powder-size to sand-size particles of pulverized rock material

Unlike soft ash from burning wood, volcanic ash is hard, abrasive, and does not dissolve in water.



Emergency Preparedness Planning: Volcanic Ash

- Can contaminate water supplies
- Can damage machinery: Generators, automotive engines, brakes, bearings, windshields, moving parts
- Can collapse roofs: ash is pulverized rock and is heavy in large quantities, especially if wet
- Electrically conductive, especially if wet
- Can reduce visibility and threaten low-lying areas
- Can make it hard to breathe and irritate the skin, eyes, nose, and throat



BES 20kV WD10mm SS58 42Pa x650 20µm
AT2821 Pavlof ash 0003 06 Jun 2013

Emergency Preparedness Planning: Volcano Warning

- Listen for emergency information and alerts
- Follow evacuation or shelter orders. If advised to evacuate, do so early
- Reduce your ash exposure by doing the following:
 - Limit your time outdoors and use a dust mask or cloth mask as a last resort if you must be outside
 - Avoid areas downwind and river valleys downstream of the volcano
 - Take temporary shelter from volcanic ash in the location where you are
 - Cover ventilation openings and seal doors and windows
 - Avoid driving in heavy ash. If you must drive, keep the windows up and do not use the air conditioning system
 - Do not get on your roof to remove ash
 - Stay indoors until authorities say it is safe to go outside



Emergency Preparedness Planning:

Ashfall: Prep and Supplies

https://alaskabirdclub.org/ep_volcano.htm

Make a plan now!

Use information from the links on the page above, or use your favorite search engine. Make a general Family Disaster Kit first, then one for your birds and other pets.

For ash events, you should consider these items in addition to your disaster supplies:

- A tarp for each vehicle parked outdoors.
- Square nosed shovel ("snow shovel") .
- Good quality N-95 dust masks for each member of the family.
- Wrap-around, sealing plastic goggles for each family member.
- Easily removable "painters tape" for poorly sealed windows, doors, or other areas that allow air to leak into the house.
- Extra air filters for your cars. Carry them with you in the car.



Emergency Preparedness Planning:

Ashfall: Shelter At Home

You may smell the ash or fumes inside your home. Unless you have a major air leak, this will be minor and nothing to worry about.

Travel: don't unless you really have to. Have an extra air filter in your vehicle, use recirculate mode on your vehicle's climate controls, and consider wearing a mask while driving.

This is a tough one: turn off your natural gas water heater and heating system, or heat pump. Gas appliances pull air through your house while in operation and can draw in ash particles.

Remove contact lenses

If doing your own clean-up work, wear old clothing that can be removed at the entry of the house or garage to avoid bringing ash particles into the house.

Do not brush ash off car windows; use water.

DO NOT USER A "LEAF BLOWER" TO CLEAR ASH FROM DRIVEWAY OR ROOF!



Questions and Answers

https://alaskabirdclub.org/ep_volcano.htm

